



Extractor set, 6-pcs., for broken screws and studs

- KSTOOLS 150.1330**
- For screws and bolts from M3 to M18
 - With the left turning thread it is possible to unscrew a broken bolt after drilling a respective size hole for the extractor
 - Tightening direction left-handed = loosening direction of the bolt
 - 6 Piece set in practical box



Screw grab, 15 ml, screwing assistance

- KSTOOLS 500.1010** Screw Grab bottle 15 ml
- Helps with worn and damaged screw heads, nuts and bolts
 - Increases the static friction between tool and screw by over 400 %
 - Non toxic washes off, deposit free
 - Works immediately
 - Suitable for all screw heads
 - Once opened bottles can be stored for an unlimited period



Tap and die set, 6-pcs.

- KSTOOLS 331.0690** consists of:
- | | |
|---|--|
| 1 x Chuck for taps, square drive 3/8" for sizes M3 - M8 | 1 x Die socket 3/8", max. Ø 20,7 mm (M6) |
| Outer diameter bush 20,35 mm Height bush 40,00 mm | 1 x Die socket 3/8", max. Ø 25,4 mm (M9) |
| 1 x Chuck for die, square drive 3/8" for sizes M5 - M12 | 1 x Double open ended chuck spanner |
| Outer diameter bush 26,35 mm Height bush 47,80 mm | 1 x T-Grip ratchet 3/8", 72 -teeth |



Spiral extractor!



Spiral extractor set, 10-pcs.

KS TOOLS 150.1370 consists of:	size	pilot drill Ø
- Spiral extractor, short form (L=36 mm) with hexagon drive dim. 13mm, minimal space required	150.1371 Extractor 1/8"	3,2 mm
- Spiral slightly tapered conical design, without hole option (application)	150.1372 Extractor 5/32"	4,0 mm
- Problem screws can be extracted using the hexagon drive e.g. square drive to dim. 10, XZN and RIBE to T55 etc.	150.1373 Extractor 3/16"	4,8 mm
- Tapered for extracting screws and bolts	150.1374 Extractor 7/32"	5,5 mm
- Extractor from 1/8"-1/4", with collar, using a counter effect motion to guarantee easy extraction of the screw or bolt	150.1375 Extractor 1/2"	6,3 mm
- Applications include brakes, water pumps, gear boxes etc.	150.1376 Extractor 9/32"	7,1 mm
	150.1377 Extractor 5/16"	7,9 mm
	150.1378 Extractor 11/32"	8,7 mm
	150.1379 Extractor 3/8"	9,5 mm
	150.1380 Extractor 13/32"	10,3 mm



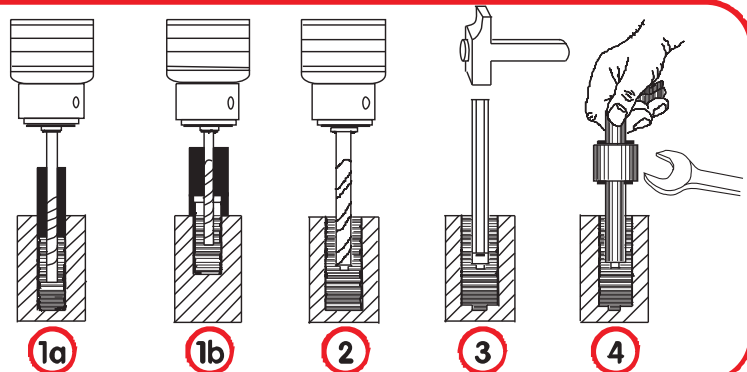
**Stud extractor set, 25-pcs.,
for screws and bolts M5-M16, with removable ABS insert**

KSTOOLS 150.1305 consists of:

5 x HSSE - Drill	Ø	3,2 - 4,8 - 6,4 - 8,0 - 8,7 mm
10 x Bushes	Ø	4,0 - 4,8 - 4,8 - 4,8 - 6,0 - 7,1 - 7,1 - 7,1 - 9,2 - 9,5 mm
5 x Extractor pins	Ø	3,2 - 4,8 - 6,4 - 8,0 - 8,7 mm
5 x Extractor nut	Ø	Dim. 10 - 11 - 13 - 14 - 17 mm

User instructions

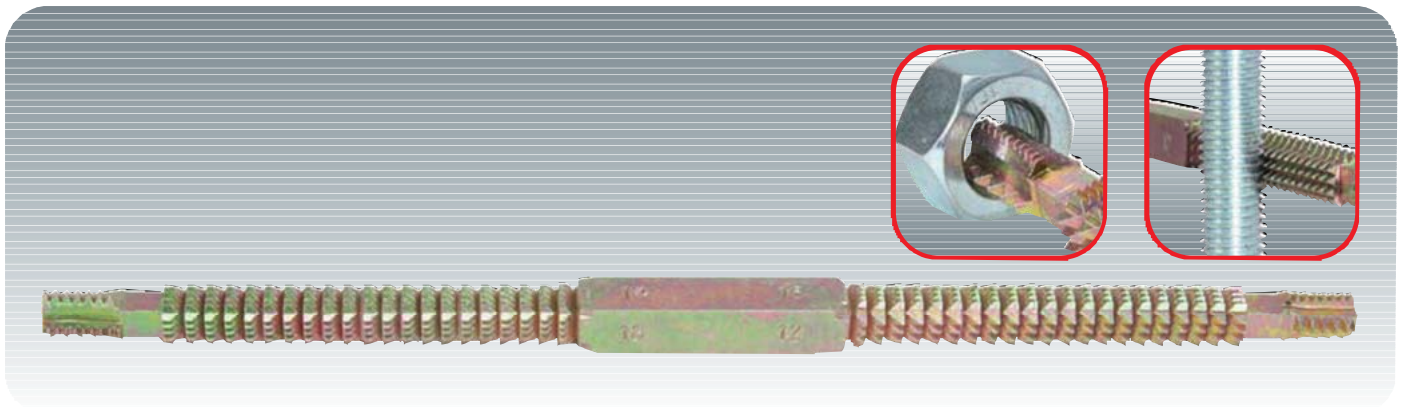
- 1a Internal break - Carefully place the centering jig inside the hole, drill out pilot hole using an HSS drill.
- 1b External break - Carefully place the centering jig over the broken screws, drill out pilot hole using an HSS drill.
- 2 Once pilot hole is drilled, drill out larger hole (See table of contents)
- 3 Using a hammer, drive the extractor punch into the drilled out hole. (without any tilt)
- 4 Using a spanner unscrew the extractor punch. (Use special gigs for countersunk or proud screws)



bushings internal Ø mm	bushings	drill pre drill Ø mm	drill	drill Ø mm	drill	extractor Nr. Ø	nut Nr. mm
4,0(B1)	150.0501	3,2	150.1305-21			(C1) 3,2	(D1) 10
4,8(B2)	150.0502	3,2	150.1305-21			(C1) 3,2	(D1) 10
4,8(B3)	150.0503	3,2	150.1305-21	4,8	150.1305-22	(C2) 4,8	(D2) 11
4,8(B4)	150.0504	3,2	150.1305-21	4,8	150.1305-22	(C2) 4,8	(D2) 11
6,0(B5)	150.0505	4,8	150.1305-22	6,4	150.1305-23	(C3) 6,4	(D3) 13
7,1(B6)	150.0506	4,8	150.1305-22	6,4	150.1305-23	(C3) 6,4	(D3) 13
7,1(B7)	150.0507	4,8	150.1305-22	8,0	150.1305-24	(C4) 8,0	(D4) 14
7,1(B8)	150.0508	4,8	150.1305-22	8,7	150.1305-25	(C5) 8,7	(D5) 17
9,2(B9)	150.0509	6,4	150.1305-23	8,7	150.1305-25	(C5) 8,7	(D5) 17
9,5(B10)	150.0510	6,4	150.1305-23	8,7	150.1305-25	(C5) 8,7	(D5) 17

Spares:

size	extractor pin	extractor nut	extractor pin incl. nut	Ø	drill
1	150.0521	150.0511	150.0511S	3,2 mm	150.1305-21
2	150.0522	150.0512	150.0512S	4,8 mm	150.1305-22
3	150.0523	150.0513	150.0513S	6,4 mm	150.1305-23
4	150.0524	150.0514	150.0514S	8,0 mm	150.1305-24
5	150.0525	150.0515	150.0515S	8,7 mm	150.1305-25



Thread repair file, for defect inner and outer threads

		mm
- For the repair of damaged inner and outer threads	150.1340 Thread repair file, metric	230
- Suitable for the repair of both right as well as left hand threads with different diameters	Weight: 130 g	
- Suitable for 8 different pitched threads	For pitch:	
		0,8 - 1,0 - 1,25 - 1,5 - 1,75 - 2,0 - 2,5 - 3,0 mm
	150.1345 Thread repair file, imperial	230
	Weight: 130 g	
	For pitch:	
		24 - 20 - 18 - 16 - 14 - 12 - 11 - 10 pitch per inch



Thread reamer Ø 25 - 140 mm for metric and imperial threads

150.1430 Thread reamer
150.1431 Replacement jaws set metric, 1 - 1,25 - 1,5 - 1,75 - 2 - 2,5 - 3 - 3,5
150.1432 Replacement jaws set imperial 4 - 5 - 6 - 7 - 7 1/2" - 8 - 9 - 10 - 11 - 11 1/2" - 12 - 14 - 16 - 18 - 20 - 24 gears per inch per
- For re-cutting, cleaning damaged threads, saves on more expensive larger units, suitable for right and left handed threads
- The soft holding guides are pressed into the thread without damage
- Quick cutting jaw modification from the magazine possible
- Application e.g. Truck spigot stubs, hydraulic cylinder screw joints, steering and push rods etc.